

# 4421 and 4515



## Specifications

**Description:** Single pole fuse blocks for  $1\frac{3}{32}$ " X  $1\frac{1}{2}$ " (10.3 X 38.1mm) fuses.

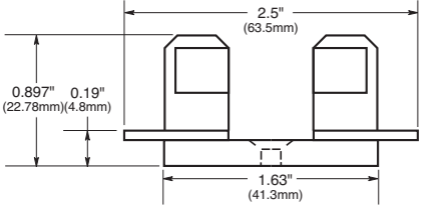
**Dimensions:** See Dimensions illustration.

### Ratings:

Volts: — 250Vac/dc (or less)

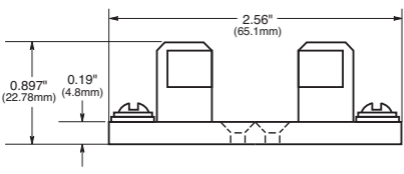
Amps: — 30A

**Agency Information:** CE



### 4421—Solder Terminals

Base width  $\frac{5}{8}$ " (15.9mm)



### 4515—Screw Terminals

Base width  $\frac{3}{4}$ " (19mm)

Note: Mounting screw hole diameter is 0.147" (3.7mm). Countersink, 0.312" (7.9mm). Max. mounting screw No. 6.